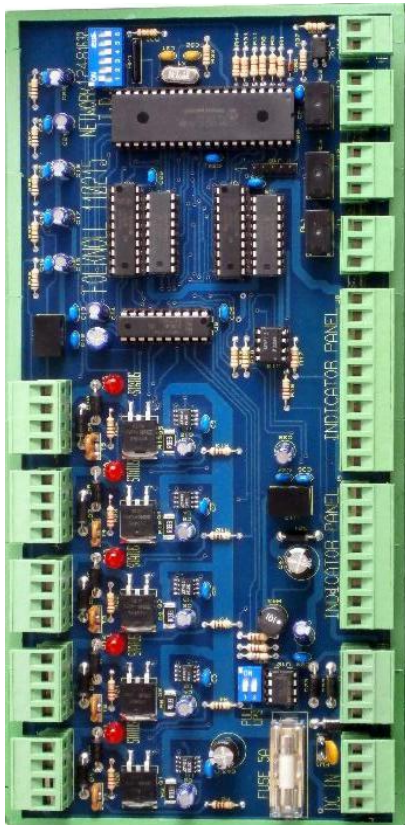


IAA 9008-301 CONTROLLER 5-ZONE FOR INTELLIGENT AFFRAY ALARM



- **Monitors and controls up to 5 alarm strips**
- **Fault monitoring**
- **Strip illumination control (flashes strips on alarm, etc.)**
- **Outputs for beacons, sounders, indicator panels, BMS, security systems, etc.**
- **Can be fitted to existing systems to add fault monitoring**
- **Operates stand-alone activating local beacons, sounders, etc.**
- **Operates as part of an integrated system communicating alarms and faults to the management system**
- **Compatible with Folknoll general alarm, custody suite and disabled toilet alarm systems**

INTELLIGENT AFFRAY ALARM

Folknoll strip switch alarm products offer fault monitoring and strip illumination for multiple strip switch systems. Ideal for use in security and care alarm systems. Strip illumination attracts attention to alarm system, indicates system is working, acts as deterrent, provides reassurance. Fault monitoring: gives confidence that when a strip is pressed the alarm will be raised. We offer a choice of standard, illuminated, IP65 strip switches, a range of colours and fixings, standard and customised indicator panels, custom engraving and alarm messages, control for up to 150 strips, outputs for additional sounders beacons etc., options for integration with custody suite and other security systems.

IAA 9008-301 CONTROLLER 5-ZONE

The IAA 9008-301 Controller 5-Zone monitors and controls up to 5-off illuminated alarm strips.

Active strips are illuminated to attract attention and indicate that the alarm system is operational. Alarmed strips are flashed to reassure staff / users that the alarm has been activated. Faulty strips are reported and their illumination is switched off so that staff know the strip is not operational and the fault can be addressed.

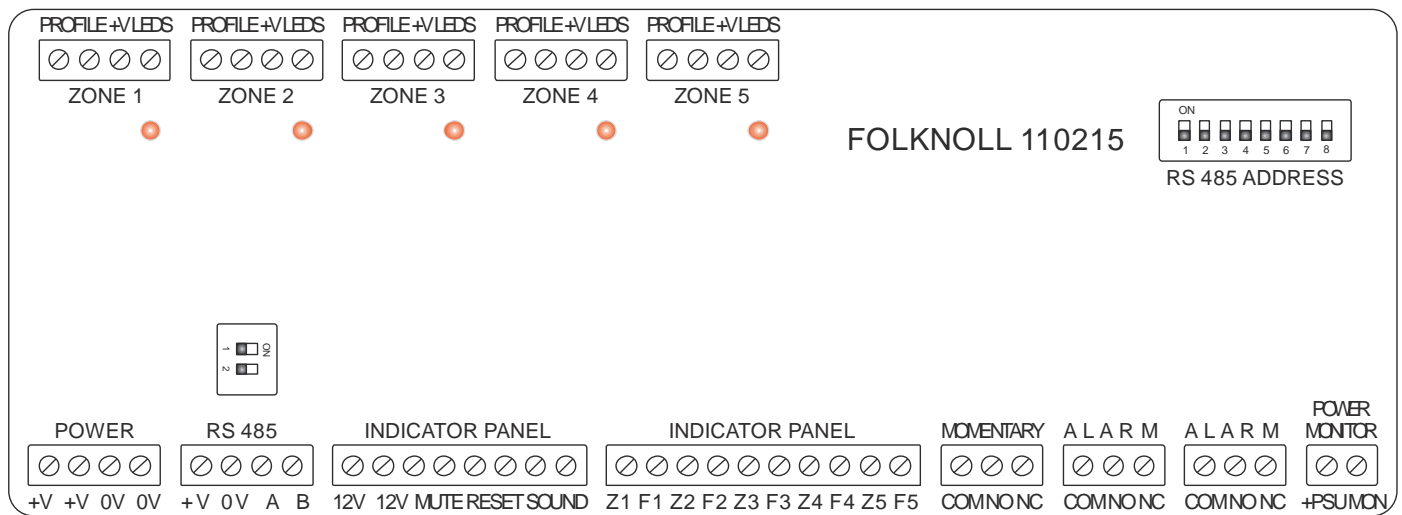
In stand-alone systems the controller activates local beacons, sounders, indicator panels and other devices on alarm. When used as part of an integrated system the controller will also pass alarms and faults to the controlling system. Alternatively controllers can operate in pass-through mode, adding fault monitoring to existing systems.

Suitable for custodial, security, care, disability alarms and similar applications

SPECIFICATIONS

Faceplate: N/A
 Mounting: Terminal rail
 Dimensions: Width: 230 mm, height: 120 mm (approx.)
 Display: N/A
 Audible Alert: N/A
 Power: 12 / 24 V dc (Usually supplied from battery backed system PSU)

CONNECTIONS



ABOUT FOLKNOLL

We are a UK based company with over 30 years of design and manufacturing experience. All our products and systems are designed for toughness, reliability, easy installation, simple configuration, straightforward operation and low maintenance.

If you need custom engraved panels, additional features or special systems, contact us and we will be pleased to discuss your requirements.

For further information about our wide range of products and services contact us at:

Folknoll Group Ltd.
 Old North Rd, Royston, HERTS, SG8 5DT, UK
 +44 (0) 1763 234567 sales@folknoll.co.uk www.folknoll.co.uk