



BATTERY BACKED LCD/IO PSU WITH SNI INTERFACE

Surface mount, steel enclosure with screw fixing

Suitable for use with a wide range of mains supplies

Internal batteries for 24 hours quiescent
+ 30 mins alarm operation

Document M compatible operation

SNI Interface for Folknoll network alarm systems

Battery and mains fault indication

Voltage fluctuation tolerant - ideal for remote locations

DISABLED TOILET ALARMS

Our vandal resistant, BS8300:2009 compliant, disabled toilet alarm system provides cost-effective solutions built from standard and bespoke units. Our toilet alarms can be combined with disabled refuge EVC, fire telephone and other systems. Ideal for shops, offices, hotels and other public spaces.

PSU-SNI-LCD: PSU WITH SNI LCD INTERFACE

The PSU-SNI-LCD: PSU with SNI LCD Interface offers a battery backed LCD indicator / IO controller power supply with a network interface for Folknoll SNI alarm monitoring systems.

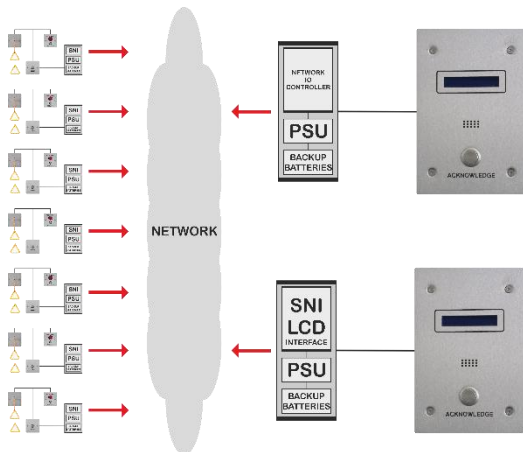
MAKING SYSTEM DESIGN, INSTALLATION AND MAINTENANCE EASIER AND CHEAPER

BATTERY BACKED PSU

The unit is supplied with the sufficient battery storage to operate the local system for 24 hours with 30 mins of alarm activity. The PSU will operate from a wide range of mains voltages (90-264Vac) making the system tolerant of voltage fluctuations and suitable for use in remote locations with unreliable supplies.

SNI LCD INTERFACE

This unit has a built-in SNI LCD/IO interface suitable for interfacing LCD indicator panels / IO controllers with Folknoll SNI network alarm systems. Folknoll SNI network alarm systems offer document M compatible remote monitoring of up to 256 local alarm systems.



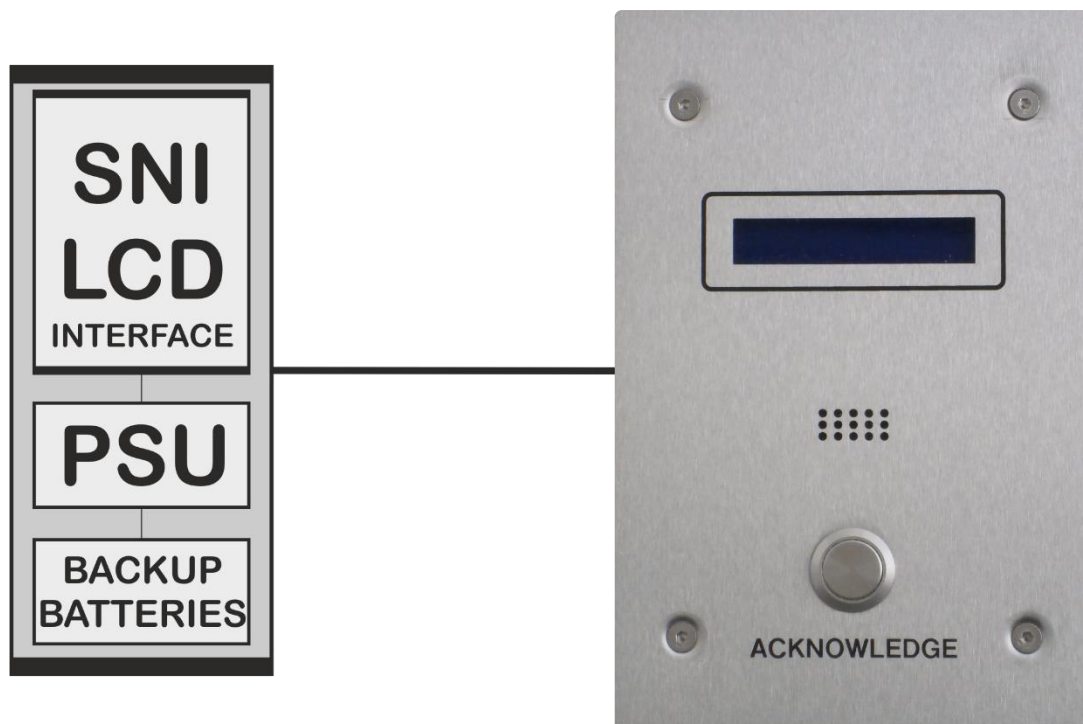
TYPICAL APPLICATION

A networked toilet alarm system comprising up to 256 toilets and one or more LCD monitoring panels.

**THE BATTERY BACKED PSU ENSURES THE LCD PANEL(S)/IO CONTROLLER(S) CONTINUE TO OPERATE
IN THE EVENT OF A MAINS SUPPLY FAILURE**

(requires network to remain operational for remote monitoring)

TYPICAL MONITORING LOCATION



SPECIFICATIONS

Enclosure:	Mild steel, white painted
Mounting:	Surface mounting
Dimensions:	Width: 235mm, height: 205mm, depth: 90mm (approx.)
Connections:	Mains: terminals Network: RJ45 LCD indicator panel(s): screw terminals
Power:	Mains (90-264Vac, at 50-60Hz)
Operating temperature:	-10°C to +40°C at 95% RH
Network interface:	10/100 Mb/s, auto MDI/MDX, magnetic isolation protection: 1.5kV

ABOUT FOLKNOLL

We are a UK based systems design, manufacturing and installation company. Since 1975 we have been supplying tough, reliable, practical, alarm and control systems for the private and public sectors. All of our products and systems have been designed for easy installation and low maintenance by experienced engineers. As original manufacturers, all of our products and systems can be customised to suit your requirements. We also offer individual engraving, special finishes and antimicrobial coatings for all of our equipment.

GET IN TOUCH

Please contact us for further information about our wide range of products and services and find out how we can provide a solution for you.



Old North Rd, Royston, HERTS, SG8 5DT, UK
+44 (0) 1763 234567

enquiries@folknoll.co.uk www.folknoll.co.uk