



SNI CLIX CONTROLLER AND LCD/IO I/F WITH PSU

Surface mount, steel enclosure with screw fixing

Suitable for use with a wide range of mains supplies

**Internal batteries for 24-hour quiescent
+ 30 mins alarm operation**

Document M compatible operation

SNI network interface for Folknoll network alarm systems

Battery and mains fault indication

Voltage fluctuation tolerant - ideal for remote locations

EMERGENCY ASSISTANCE ALARMS

Folknoll emergency assistance alarm systems offer cost-effective, vandal resistant, **BS 8300** and **DOCUMENT M** compliant solutions built from standard and bespoke units. Our alarms can be combined with disabled refuge EVC, fire telephone and other systems. Ideal for **SHOPS, OFFICES, HOTELS AND OTHER PUBLIC SPACES**.

PSU-SNI-CLIX: SNI CLIX CONTROLLER WITH PSU

The PSU-SNI-CLIX: SNI CLIX Controller with PSU offers a SNI CLIX network controller and LCD/IO interface with battery backed, power supply unit, in a single surface mount enclosure.

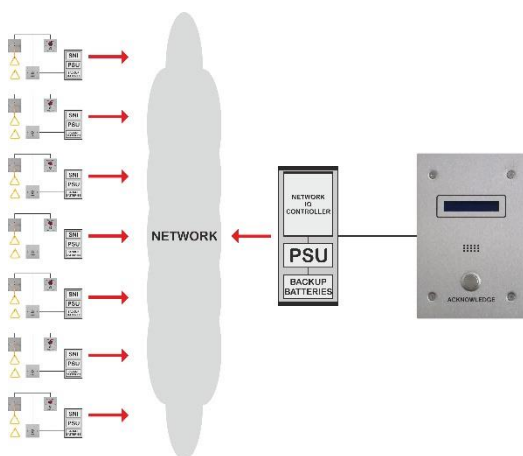
MAKING SYSTEM DESIGN, INSTALLATION AND MAINTENANCE EASIER AND CHEAPER

BATTERY BACKED PSU

The unit is supplied with sufficient battery storage to operate the controller and LCDs for 30 mins of alarm activity and 24 hours standby. The PSU will operate from a wide range of mains voltages (90-264Vac) making system tolerant of voltage fluctuations and suitable for use in remote locations with unreliable supplies.

SNI CLIX NETWORK CONTROLLER

The built-in SNI CLIX controller will monitor up to 256 Document M compatible networked emergency assistance alarm systems and interface up to 8 local LCD indicator panel / IO controllers.

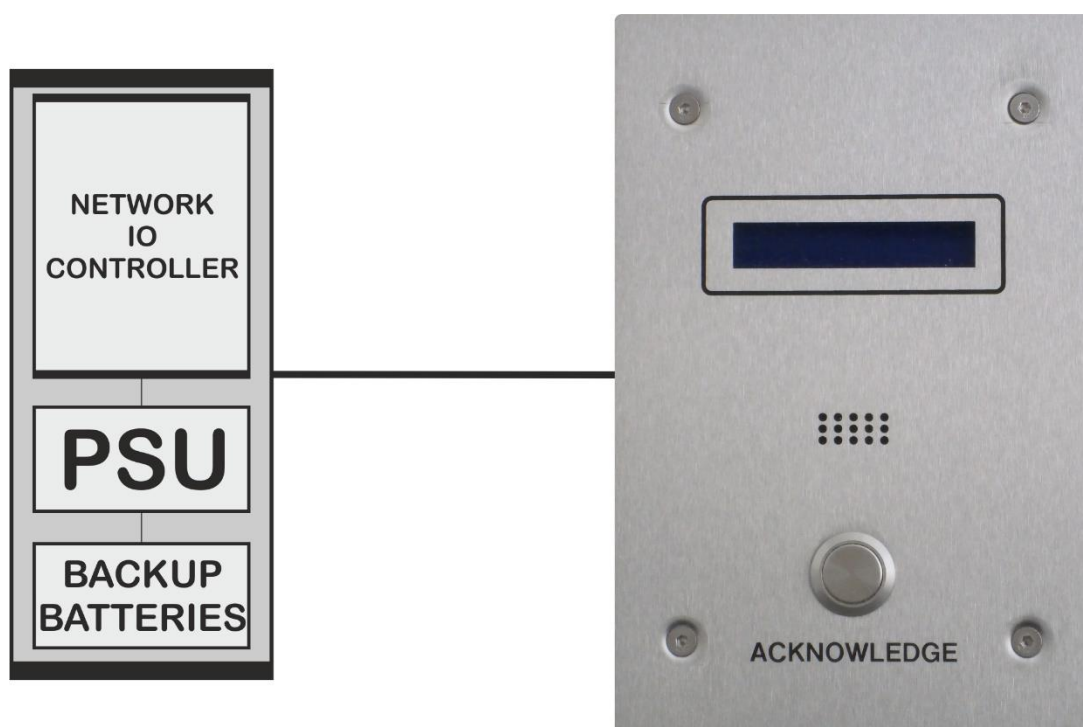


TYPICAL APPLICATION

A networked toilet alarm system comprising a number of local alarm systems and an LCD monitoring panels.

CONTROLLER AND ATTACHED LCD PANEL(S) WILL CONTINUE TO OPERATE IF THE MAINS SUPPLY FAILS
(requires network to remain operational for remote monitoring)

TYPICAL MONITORING LOCATION



SPECIFICATIONS

Enclosure:	Mild steel, white painted
Mounting:	Surface mounting
Dimensions:	Width: 235mm, height: 205mm, depth: 90mm (approx.)
Connections:	Mains: terminals Network: RJ45 LCD indicator panels / IO controllers: screw terminals
Power:	Mains (90-264Vac, at 50-60Hz)
Operating temperature:	-10 to +40°C at 95% RH
Network interface:	Gigabit Ethernet

ABOUT FOLKNOLL

We are a UK based systems design, manufacturing and installation company. Since 1975 we have been supplying tough, reliable, practical, alarm and control systems for the private and public sectors. All of our products and systems have been designed for easy installation and low maintenance by experienced engineers. As original manufacturers, all of our products and systems can be customised to suit your requirements. We also offer individual engraving, special finishes and antimicrobial coatings for all of our equipment.

GET IN TOUCH

Please contact us for further information about our wide range of products and services and find out how we can provide a solution for you.