



STANDARD SYSTEM MASTER FOR UP TO 5 OUTSTATIONS

LCD status display, speaker, microphone, fault LED

High audio output for noisy environments (max 80dB)

Tough vandal resistant construction

Stainless steel faceplate

Keyed enable switch, vandal resistant buttons

Custom labels available

Anti-tamper fixings available

Ideal for public spaces

DISABLED REFUGE EVCS

Folknoll's vandal resistant, **BS 5839-9** compatible, disabled refuge EVCS offers vandal resistant solutions for **MUSEUMS, RAILWAY STATIONS, HOTELS** and other **PUBLIC SPACES**. Our great range of outstations, master stations and control equipment, enables us to construct systems to suit your requirements. All of our products can be customised with photoluminescent, Braille, tactile and multilingual annotation. We can even combine our disabled refuge EVCS with fire telephones, emergency assistance and other building alarms to provide **COST-EFFECTIVE** solutions for smaller sites.

STANDARD SYSTEMS

Folknoll standard systems offer more outstations, additional cabling options, third-party interfaces and vandal resistant master stations.

RA7705.01/05: MASTER STATION, STANDARD, 5-WAY

Our RA7705.01/05 is our vandal resistant surface or flush mount master station for systems of up to 5 outstations. The unit has an integral microphone and speaker and is fitted with fault LED and large control buttons. The speaker volume and microphone gain can be adjusted to suit the operating environment, with a maximum output of 80dB for noisy areas. The master station is usually mounted in a staffed area, e.g., control room or reception and used for communication with users in the event of an emergency.

CONSTRUCTION

The faceplate is made from vandal resistant, brushed finish stainless steel with black annotation. The unit is usually supplied with a surface or flush mount back box. Other finishes, alternative annotation and custom back boxes are available on request.

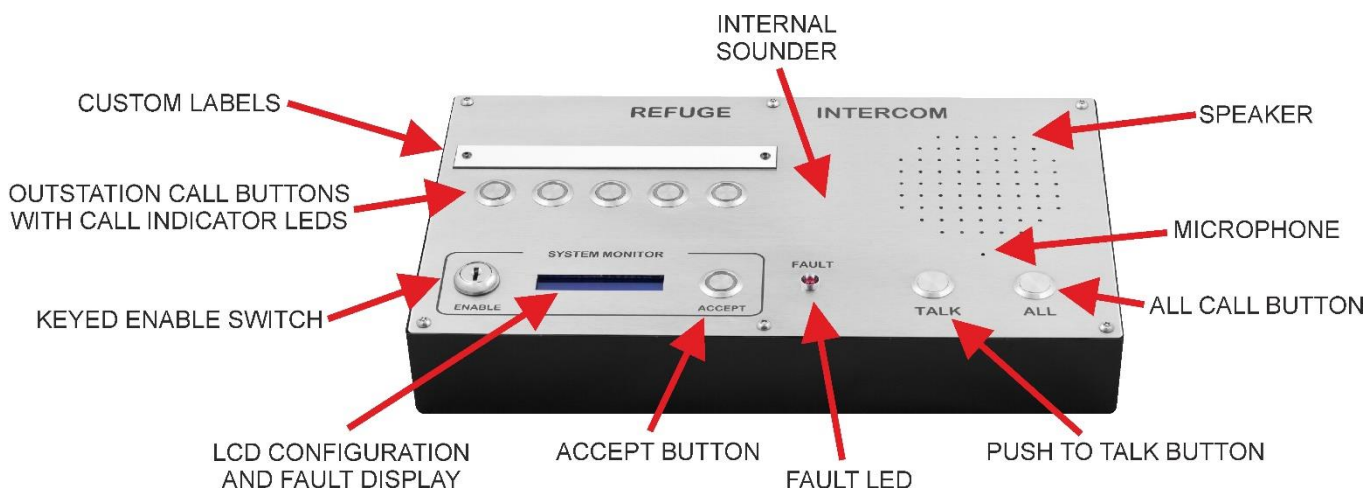
PRACTICAL SOLUTION

This unit has been designed to accommodate BS compliant, fire-resistant cables with sufficient space for cable management, suitable terminals and knockouts for appropriate cable glands.

SPECIFICATIONS

Faceplate:	Stainless steel, brushed finished, black annotation
Dimensions (surface):	Width: 350mm, height: 200mm (approx.)
Dimensions(flush):	Width: 366mm, height: 266mm (approx.)
Back box:	Mild steel, painted finish, black
Mounting:	Surface, angle or flush mount options
Max system:	5 outstations
Audio:	Adjustable (max 80dB)
Power:	24Vdc (usually supplied from the battery backed, monitored, system PSU)

FEATURES



ABOUT FOLKNOLL

We are a UK based systems design, manufacturing and installation company. Since 1975 we have been supplying tough, reliable, practical, alarm and control systems for the private and public sectors. All of our products and systems have been designed for easy installation and low maintenance by experienced engineers. As original manufacturers, all of our products and systems can be customised to suit your requirements. We also offer individual annotation, custom engraving and special finishes for all of our equipment.

GET IN TOUCH

Please contact us for further information about our wide range of products and services and find out how we can provide a solution for you.